

## Weight Management Enhanced Service Specification

From 1st July 2021 referrals made to Healthier You can be claimed for by General Practice as part of the Weight Management Enhanced Service Specification.

LWTC is committed to ensuring that General Practices have the resources and knowledge require to support their patients in joining Healthier You.

For further support please contact [l.gibson@lwtcsupport.co.uk](mailto:l.gibson@lwtcsupport.co.uk) Please refer to the Enhanced Service Specifications for full details on additional claims.

## General Practice Dashboard

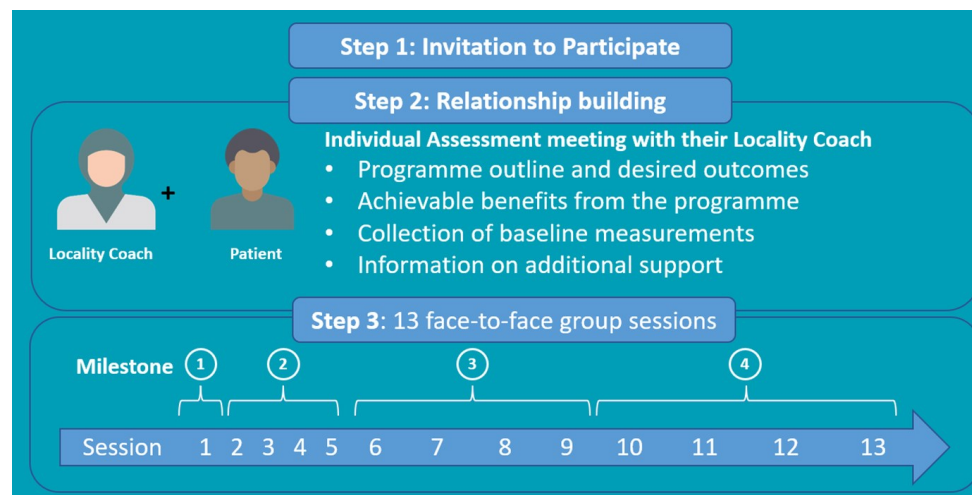
The Nottingham and Nottinghamshire General Practice Dashboard allows health care professionals to monitor referral levels, service user progress and key information around demographics service user experience. Health outcomes will be reported on the dashboard as more patients progress through their nine-month intervention.

To access the General Practice Dashboard please click [here](#)

## September 2021 Monthly Update

### Healthier You Face to Face Programme Journey

A patient will be contacted by their Locality Coach, who will be their main point of contact throughout the programme. Following the invitation to the programme the Individual Assessment offers patient a chance to discuss their desired outcomes and goals alongside the collection of baseline measurements. Patients are provided with a choice of upcoming groups including times on evenings and weekends. The 13 face to face group sessions are spread across 9 months allowing the patient support from their Health Coach for the duration of that time.



### Meet The Team

#### Indie Dhariwal— Support & Performance Manager

Indie is a key member of our team. She is the cornerstone between our network of coaches, the wider community and our NHS partners ensuring that everything runs like clockwork.



### Resources Available

To access resources for the NHS DPP please use the links below:

[Patient Leaflet](#)

[Supplemental Patient Leaflet](#)

[Nottingham & Nottinghamshire Practitioner Recourse Pack](#)

[Healthier You Referral Form](#) (via TeamNet)

### Who to contact for support

*General Enquiries*  
[info@lwtcsupport.co.uk](mailto:info@lwtcsupport.co.uk)

*Lucy Gibson, Compliance & GP Liaison Officer*  
[l.gibson@lwtcsupport.co.uk](mailto:l.gibson@lwtcsupport.co.uk)