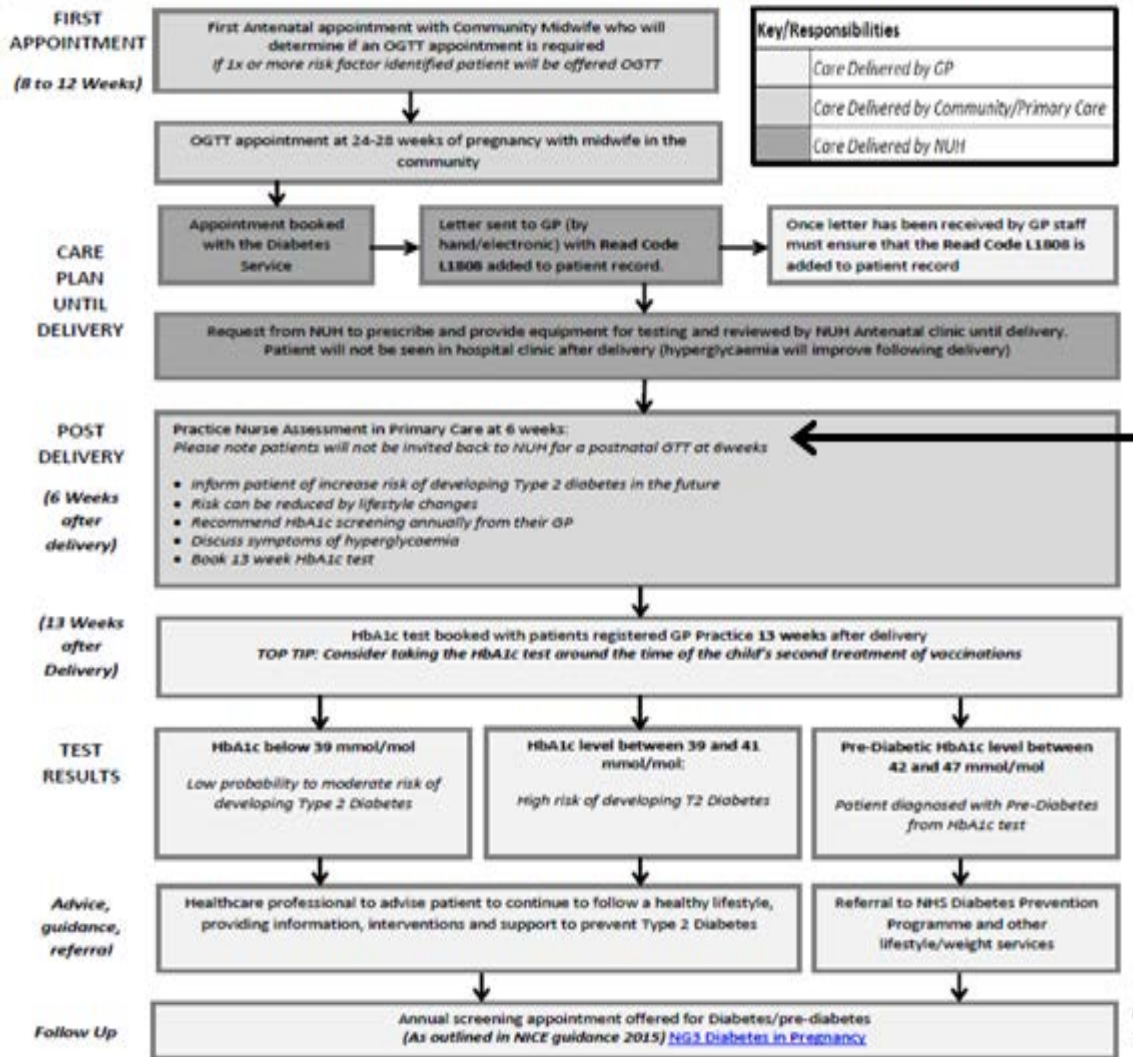


Nottinghamshire pathway for women with Gestational Diabetes



E-Healthscope: any cases where a patient has not had an HbA1c test in the last year will be stored in the practices workflow. This is the main priority group for GP's to focus on. The remainder of patients will have had their annual test.

In order to view Gestational Diabetes (GDM) navigate to the case findings register and access reports. You will see a pull down box on the top left corner of the system where you can select Gestational Diabetes where the information will be stored.