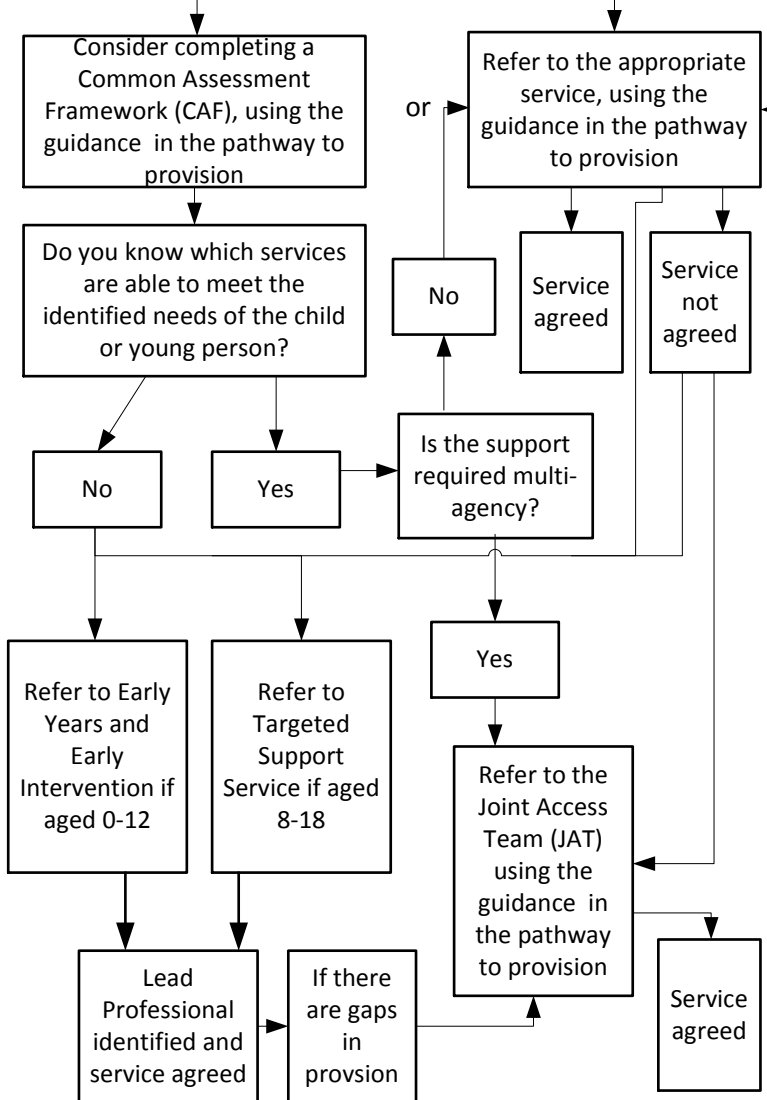


NOTTINGHAMSHIRE CHILDREN'S TRUST PATHWAY TO PROVISION

ACCESSING ADULT SOCIAL CARE SERVICES IN NOTTINGHAMSHIRE

CHILDREN'S EARLY HELP

If you think a child or young person is vulnerable or in need of early help to achieve expected outcomes:



SAFEGUARDING

If you have a new safeguarding concern regarding a child or young person or consider that a child is in need of specialist support from children's social care in line with the threshold guidance:*

If you have a safeguarding concern regarding a vulnerable adult in line with the threshold and pathway guidance for referrers:*

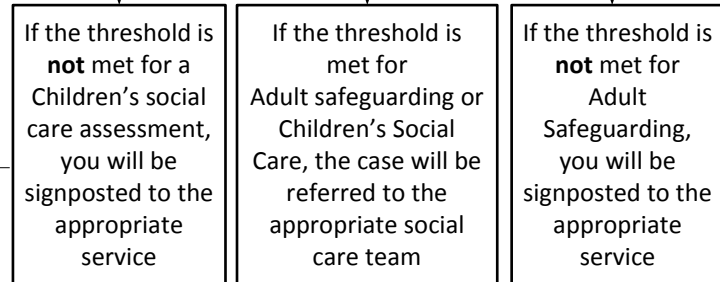
Contact the Multi-Agency Safeguarding Hub (MASH)

0300 500 80 90

during the following core working hours:
8.30 am – 5.00 pm – Monday to Thursday
8.30 am – 4.30 pm – Friday

To submit an online form visit –
www.nottinghamshire.gov.uk/MASH

Outside of the core hours, and in an emergency, contact the emergency duty team (EDT) on
0300 456 4546



*Service request forms & guidance can be found at:
www.nottinghamshire.gov.uk/pathwaytoprovision
www.nottinghamshire.gov.uk/caring/adultsocialcare/backgroundsupport/safeguardingadults

ADULT SOCIAL CARE

If you think an Adult needs care and support because of their age, disability, health or the personal situation they find themselves in:

