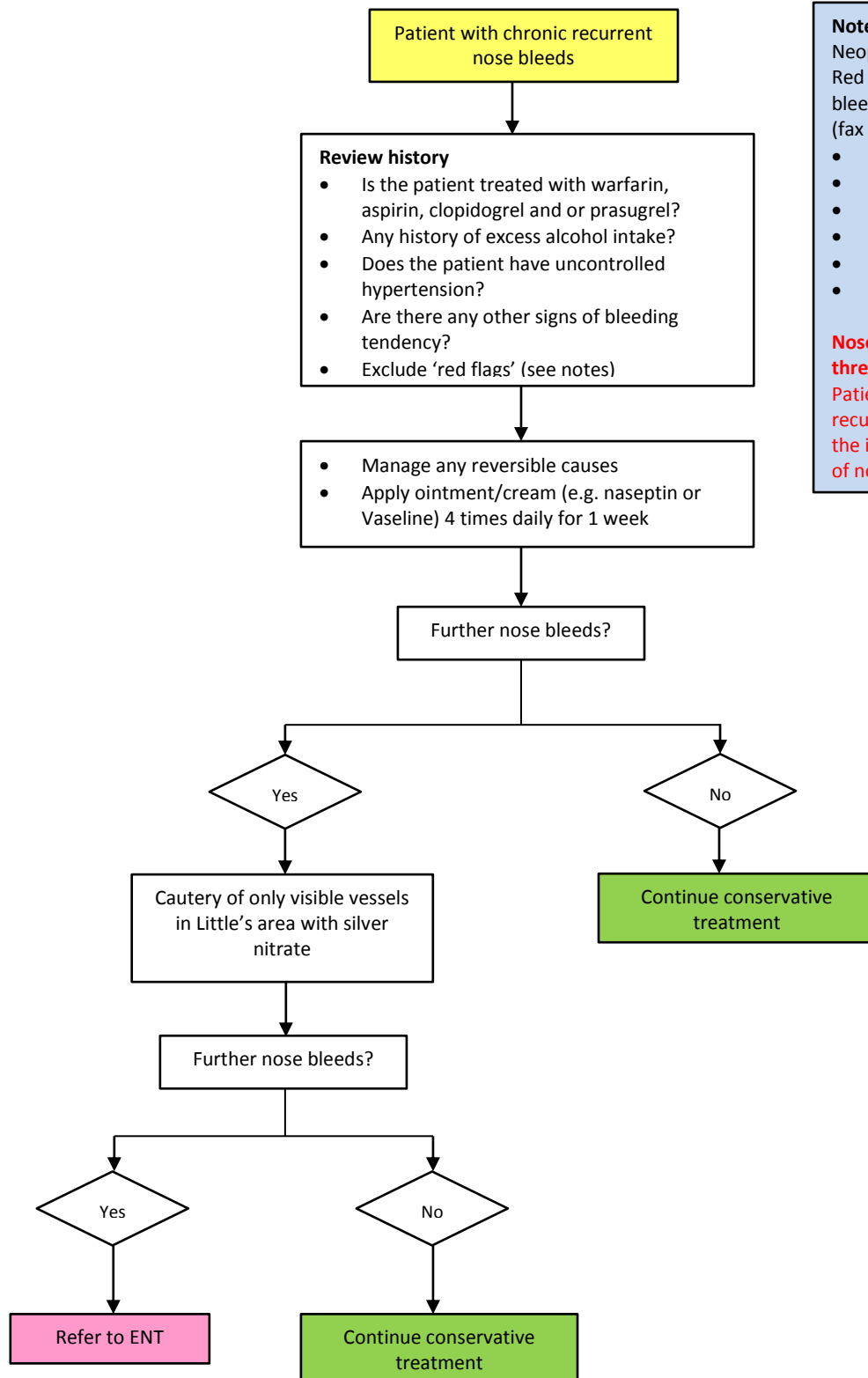


Chronic Recurrent Nose Bleeds



Notes

Neoplasm is very rare.
Red flags in patients with recurrent nose bleeds, requiring urgent referral to ENT (fax 01623 672457):

- Facial pain/swelling
- Otagia
- Unilateral nasal obstruction
- Reduced sense of smell
- Visual symptoms
- Dental symptoms

Nose bleeds can be serious and life threatening.

Patient who have had serious prolonged, recurrent nose bleeds should be given the information leaflet about prevention of nose bleeds